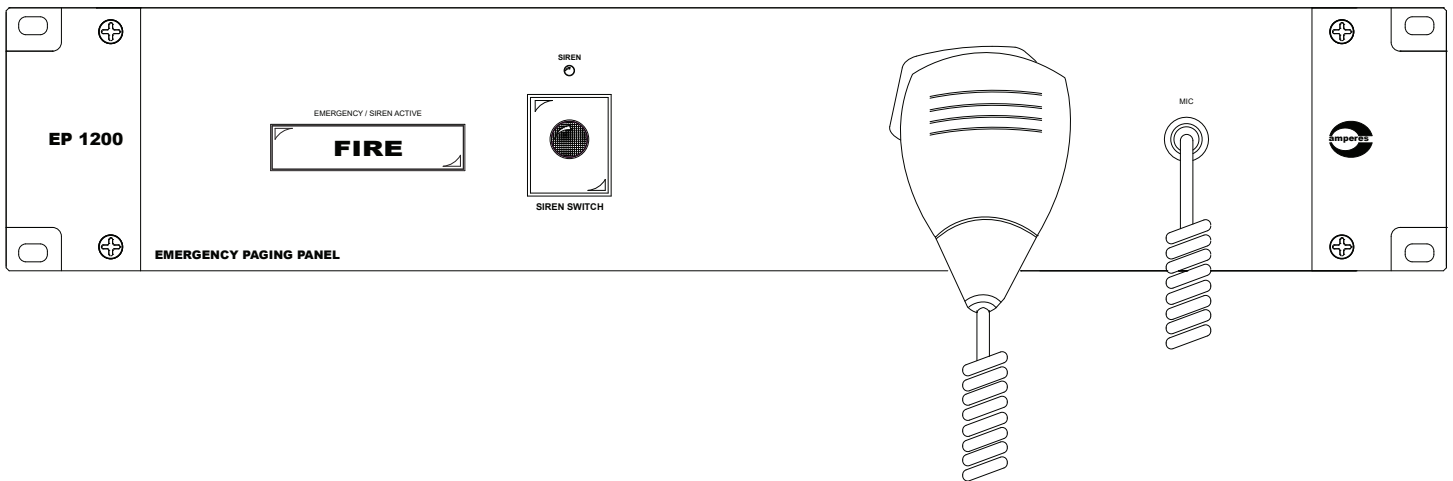




INSTRUCTION MANUAL

EP1200

Emergency Paging Microphone Panel



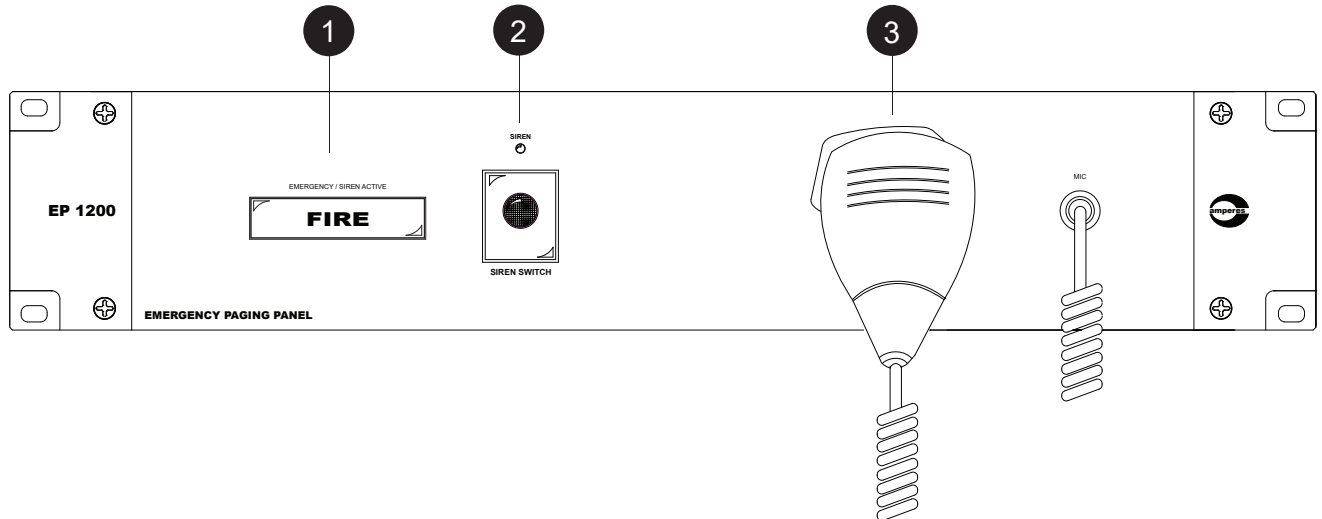
Thank you for choosing another quality product from Amperes Electronics.

Emergency Paging Panel is an essential tool for firemen during emergency, allowing direct paging to all zones and bypassing any active BGM or paging in progress.

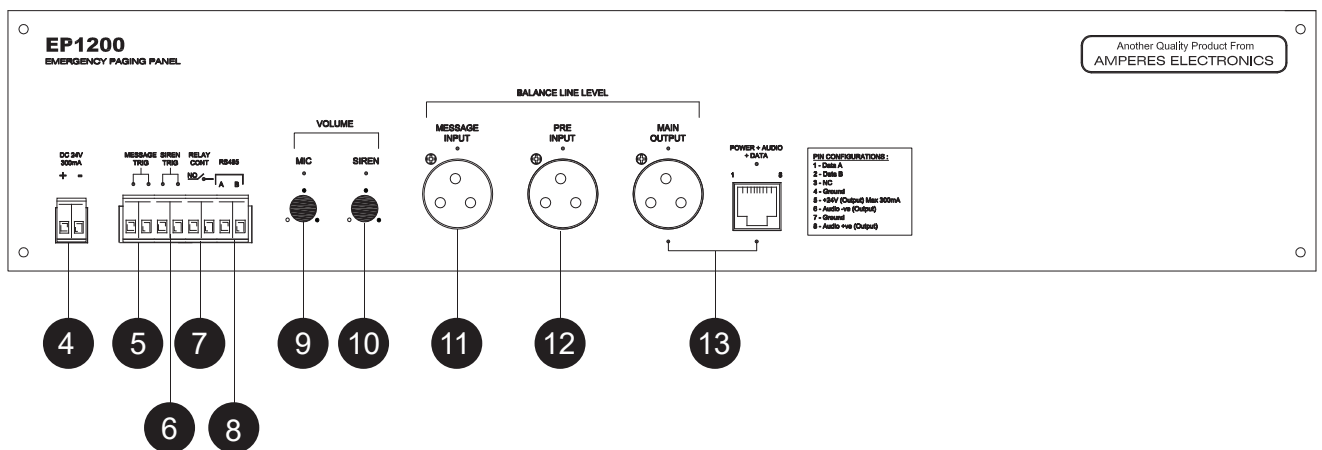
EP1200 is enhanced with communication port, enabling the unit to be used with iPX5151 IP Client for a LAN based setup. This shall allow simultaneous emergency paging or siren activation for entire multiple sub racks available in the system.

Parts Identification

Front View:



Rear View:



1. FIRE INDICATOR

Whenever siren or external activation device is triggered, the FIRE indicator shall flash alongside with siren audio broadcast. Activate the paging microphone will also turn on the flashing.

2. SIREN SWITCH

Press the siren button shall activate the siren. FIRE indicator shall lit and the MIC switch relay contact (7) shall close. Press the siren switch again will turn Off the siren.

3. HANDHELD PAGING MICROPHONE

Pressing the microphone switch shall have priority over other inputs such as Siren, External Message input as well as normal paging or BGM feeds. To page, just pick up the handset, press the button and start talking. Releasing the switch, the previous operating mode shall resume.

4. 24V INPUT

The unit operates on 24V DC. It is preferred that the unit to be supplied directly from the uninterrupted power source. ie. power supplies linked to back up batteries.

Note: Do not connect directly to the terminals of back up battery. It shall damage the equipment.

Parts Identification

5. EXTERNAL MESSAGE TRIGGER PORT

External message player can be linked to it and can be broadcasted to the speakers when this port is triggered. A voltage free contact is recommended to trigger the message playback.

6. REMOTE TRIGGER PORT FOR SIREN

External sensor device such as heat detector or fire alarm interface device can be connected to this unit to activate the siren. The external device or switch must be voltage free to avoid damage to the unit. Two ways for the external switch to turn On/Off the siren :

- 1) A <2s close-then-open to turn On; a <2s close-then-open to turn Off
- 2) A >2.5s close to turn On, an open to turn Off

7. RELAY CONTACT

Triggering the front panel mic switch message or siren shall activate an internal relay. This ports provide a dry contact which can be used to connect E/M overriding signal or to activate ALL CALL at speaker zone selector. The recommended rating for the contact is 3A. In case higher rating is required, please use external relay or contactor to accommodate the high current requirement.

8. RS485 PORT

External controls or interface devices shall be able to communicate with the unit.

9. HANDHELD MIC LEVEL CONTROL

This is to adjust the front paging mic volume. It is recommended that the setting is made during testing and commissioning works.

10. SIREN OUTPUT LEVEL CONTROL

Adjust the siren output to an optimum level during testing and commissioning works.

11. EXTERNAL MESSAGE AUDIO INPUT

The external message playback signal shall be balanced line level. (e.g: audio from MR1301)

12. PRE-AMPLIFIER INPUT JACK

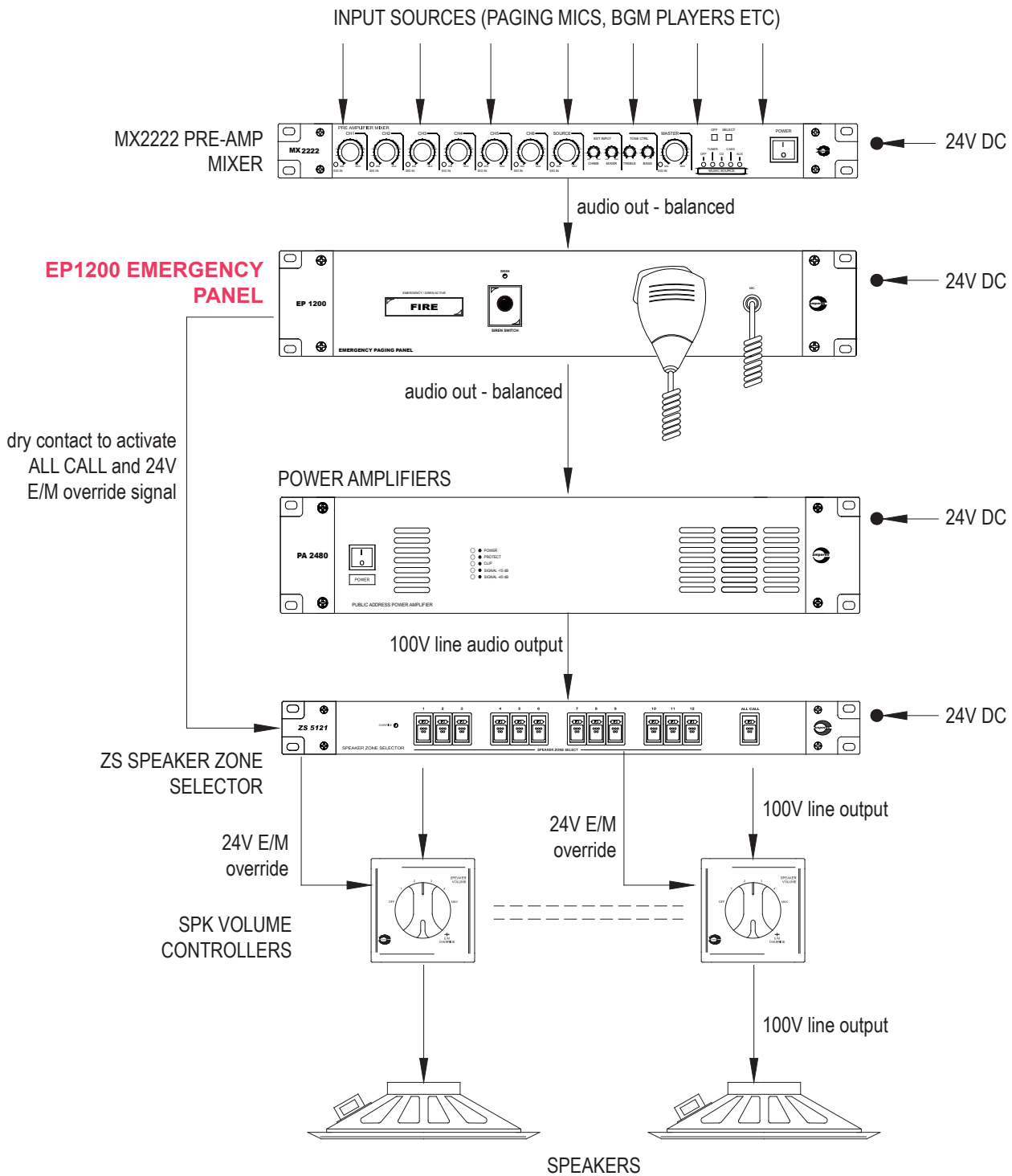
Output from pre-amplifier mixer (balanced line level) is connected to the unit which is normally closed when the unit is not activated. Triggering the panel shall bypass the signal to allow higher priority audio to the PA system.

13. DATA AUDIO OUTPUT

Audio output from the decoder is balanced line output level. RJ45 connector consists of audio, data and power with the following pin configuration:-

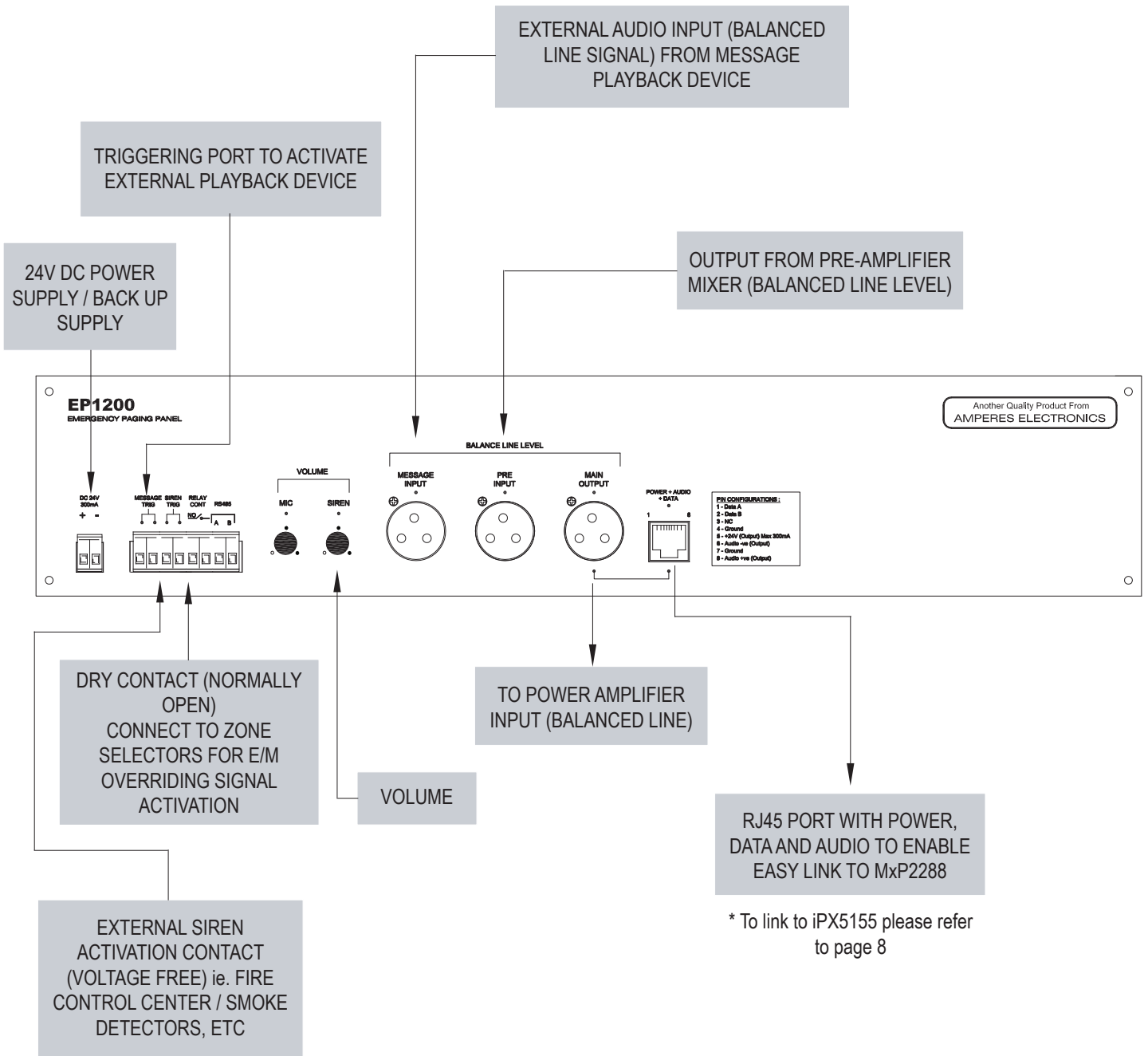
Pin 1 - Data A	Pin 5 - +24V Supply
Pin 2 - Data B	Pin 6 - Audio -ve output
Pin 3 - NC	Pin 7 - Ground
Pin 4 - Ground	Pin 8 - Audio +ve Output

Schematic Diagram

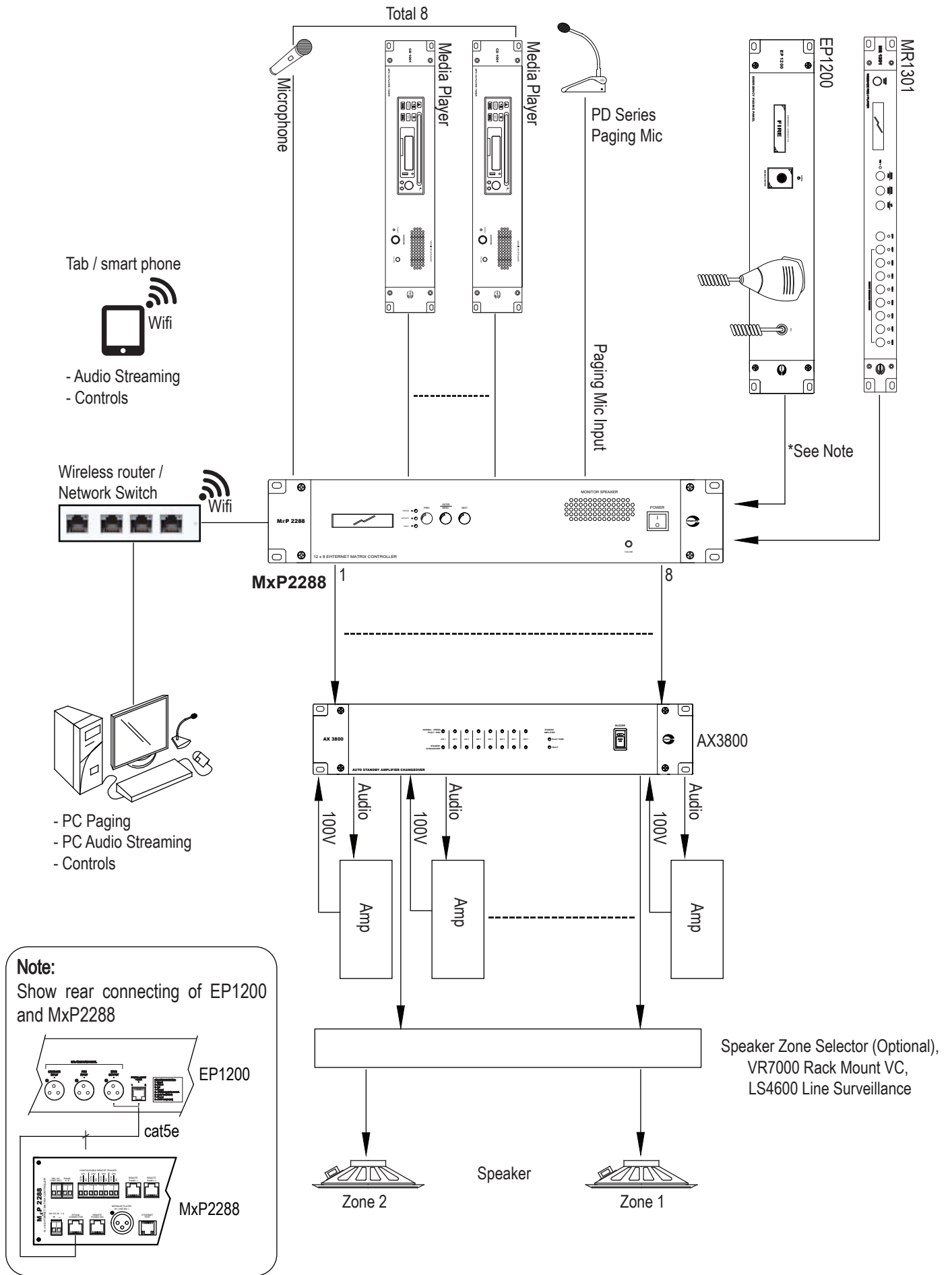


The schematic shown above is typical for most conventional installations. Audio output from mixer shall go through EP1200 prior to amplifier inputs to enable emergency paging being highest priority.

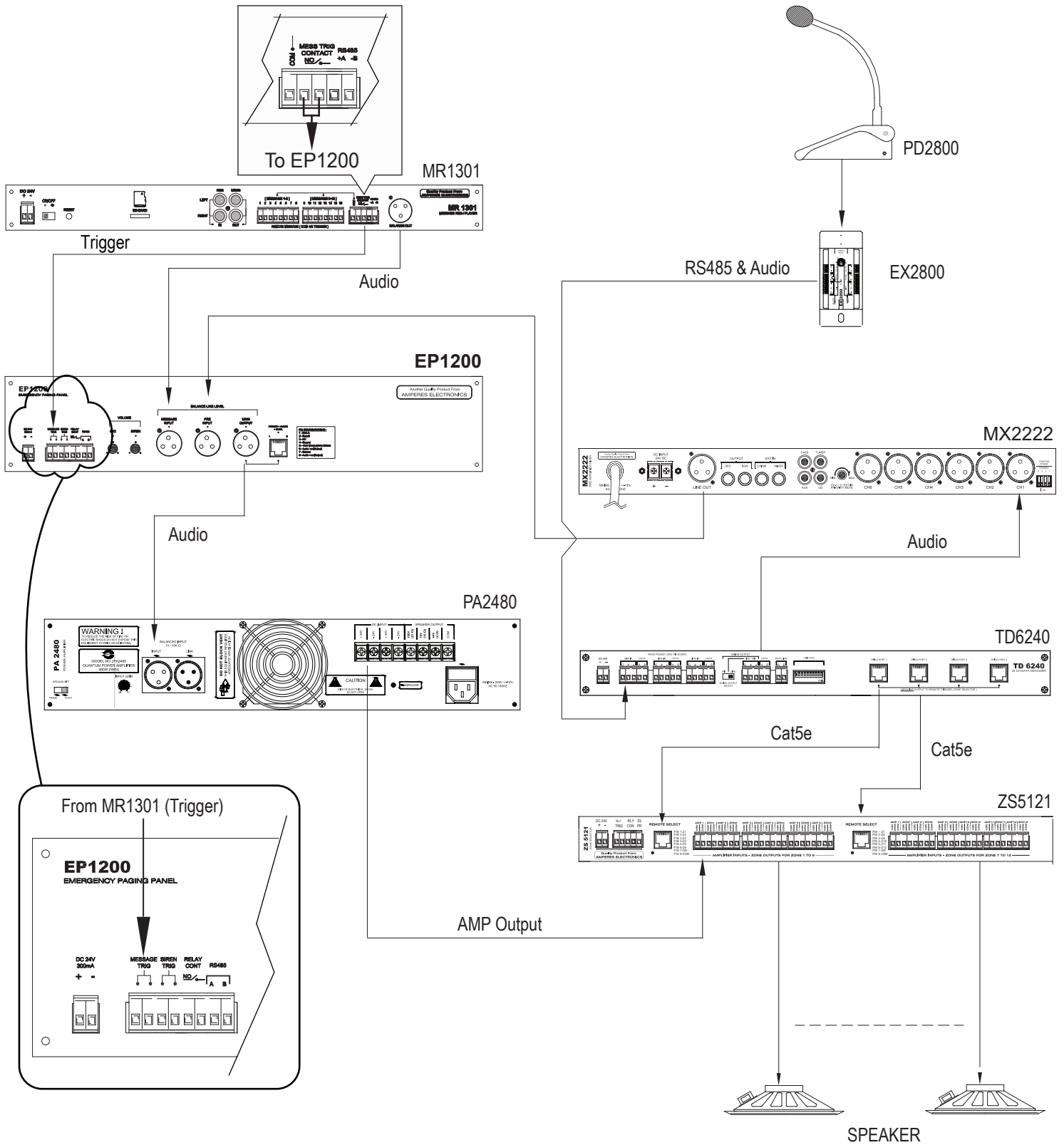
Connecting The Unit



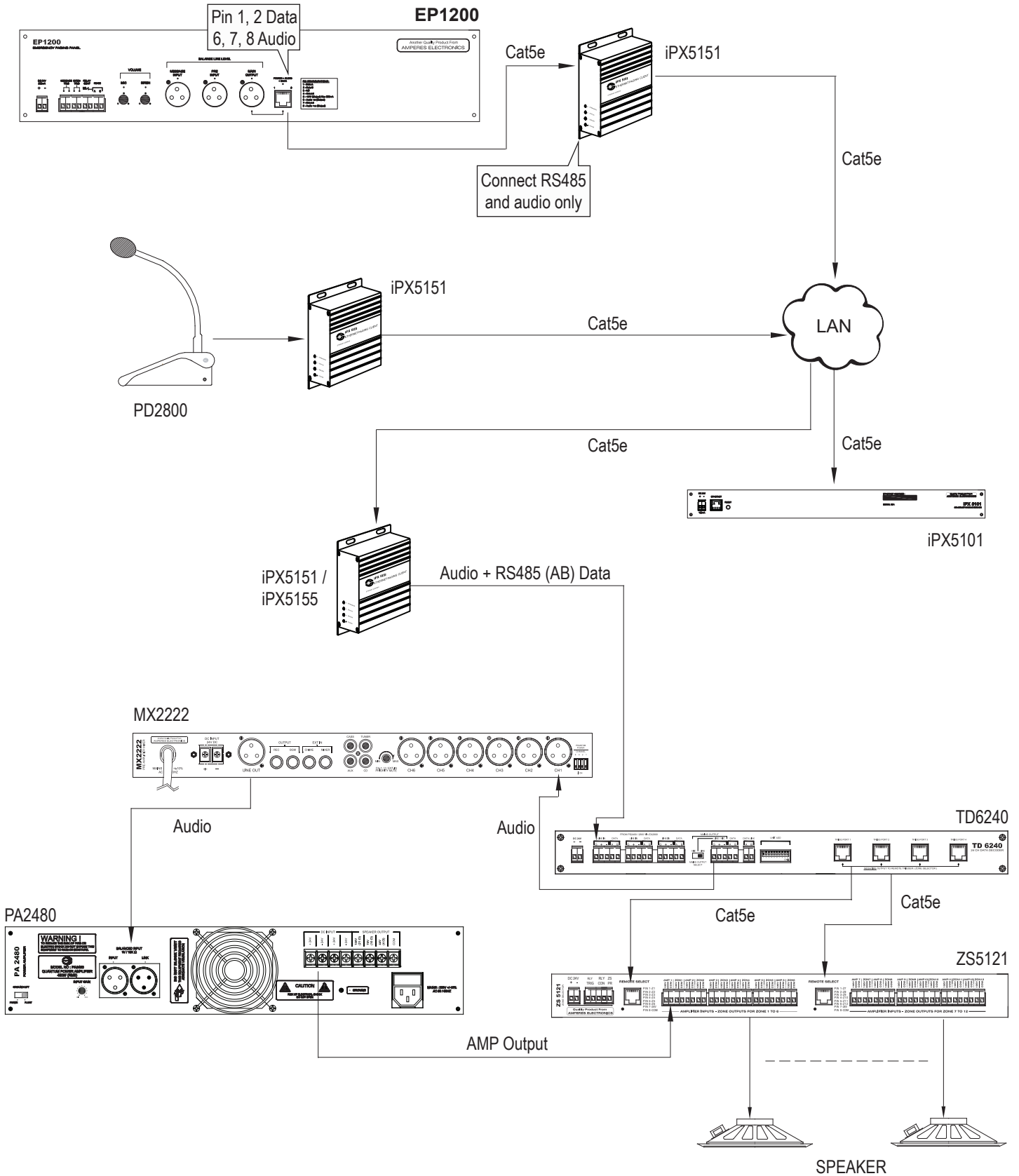
Connecting The Unit - Matrix System



Connecting The Unit - Conventional System

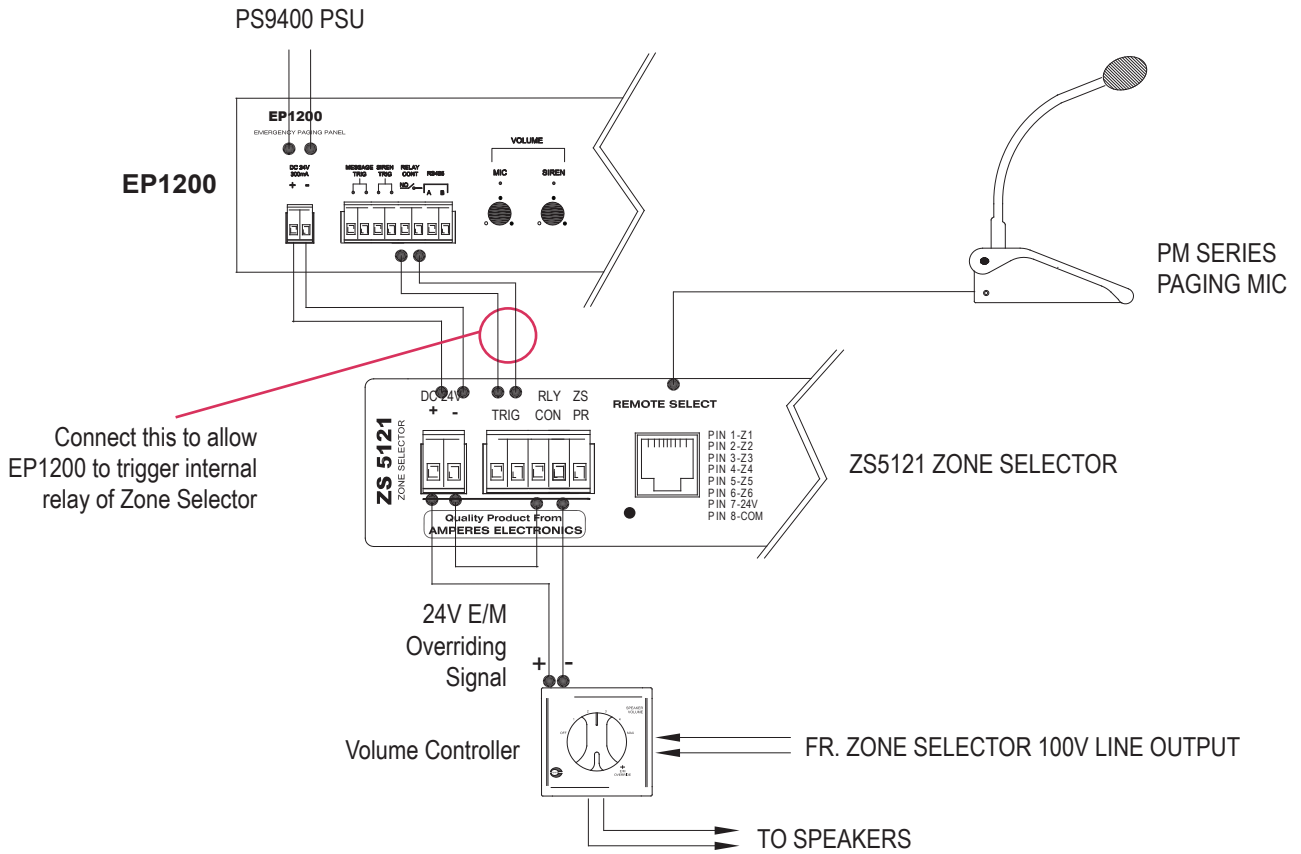


Connecting The Unit: IP Setup



EP1200, which is installed at main rack for a large system using IP as communication interface, shall be able to override remote buildings / system as similar to single rack installation.

Configuring ALL CALL And E/M Overriding



The above diagram shows detailed connections for using EP1200 to override volume control and activating ALL CALL at zone selector.

Summary Of Features

- Built in siren tone generator (constant signal)
- Visual FIRE indicator
- External voice message activation
- Dual mode siren tone activation
- Dry contact when paging mic is activated
- Priority paging via front panel microphone, bypassing all other audio sources
- Output level controls for siren and message / paging microphone

Technical Specifications

Power requirement	24V DC
Power consumption	3.5W
MICROPHONE	
Mic sensitivity	-72 dB Omni directional
Impedance	600 Ohm
Frequency response	300 ~ 8 KHz
SIREN	
Siren frequency	Continuous at 8 KHz
Siren duration	Continuous when activated
Siren activation	Front test switch / remote contact
Input channel	Pre-amplifier output, message recorder
Output level	Balanced line out (1.2V)
Priority sequence	Paging mic - message - siren - pre amp in
Indicators	Front FIRE with backlight illumination
Dimension (WxHxD)	482 x 88 x 180 mm
Weight	3.0 kg

Warranty Conditions

Only Amperes Electronics Service Centres are allowed to make warranty repairs : a list of Amperes Electronics Service Centres may be asked for by the purchaser or send directly to Amperes Electronics Sdn Bhd at 70 Jalan Industri PBP 3, Tmn Perindustrian Pusat Bandar Puchong, 47100, Puchong, Selangor, Malaysia or its authorized dealers. This warranty is not valid if repairs are performed by unauthorized personnel or service centres.

This warranty covers only repairs and replacement of defective parts ; cost and risks of transportation as well as removal and installation of the product from the main system are for the account of the purchaser. This warranty shall not extend to the replacement of the unit.

This warranty does not cover damages caused by misuse, neglect, accident of the product as well as using the product with power supply voltage other than shown on the product, or any other power supply source / adaptor not recommended by the manufacturer.

This warranty does not cover damages caused by fire, earthquakes, floods, lightning and every cause not directly related to the unit.

This warranty does not include any indemnity in favor of the purchaser or the dealer for the period out of use of the unit; moreover the warranty does not cover any damages which may be caused to people and things when using the product.

This warranty certificate is valid only for the described product, and is not valid if modifications are made on this certificate or on the identification label applied on the product.

This warranty covers all the material and manufacturing defects and is valid for a period of 36 months from the date of purchase or for a specified period in countries where this is stated by a national law. In this case, the extension is valid only in the country where the product is purchased.

Amperes Electronics Sdn Bhd is not obliged to modify previously manufactured products under warranty if the design changes or improvements are made.

Disclaimer

Information contained in this manual is subject to change without prior notice and does not represent a commitment on the part of the vendor. AMPERES ELECTRONICS SDN BHD shall not be liable for any loss or damages whatsoever arising from the use of information or any error contained in this manual.

It is recommended that all services and repairs on this product be carried out by AMPERES ELECTRONICS SDN BHD or its authorized service agents.

AMPERES series must only be used for the purpose they were intended by the manufacturer and in conjunction with this operating manual.

AMPERES ELECTRONICS SDN BHD cannot accept any liability whatsoever for any loss or damages caused by service, maintenance or repair by unauthorized personnel, or by use other than that intended by the manufacturer.

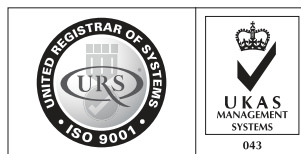


EP1200

EMERGENCY PAGING PANEL

Another Quality Product From
Amperes Electronics Sdn Bhd
Co Reg : 509025-X
www.ampereselectronics.com

This product has been manufactured under strict
ISO9001 : 2015 management system
Certificate no: 16895 / A / 0001 / UK / En



ISO 9001:2015
Design & Manufacture of Public Address Equipment and Systems
Certificate No. 16895 / A / 0001 / UK / En

Made In Malaysia
Published: August 2017